

# Excessive Alcohol Consumption; Economic Costs, Michigan 2010

## What is excessive alcohol consumption?

### Binge Drinking:

- 4 or more drinks consumed on one occasion for women
- 5 or more drinks consumed on one occasion for men

### Heavy Drinking:

- 8 or more drinks per week for women
- 15 or more drinks per week for men

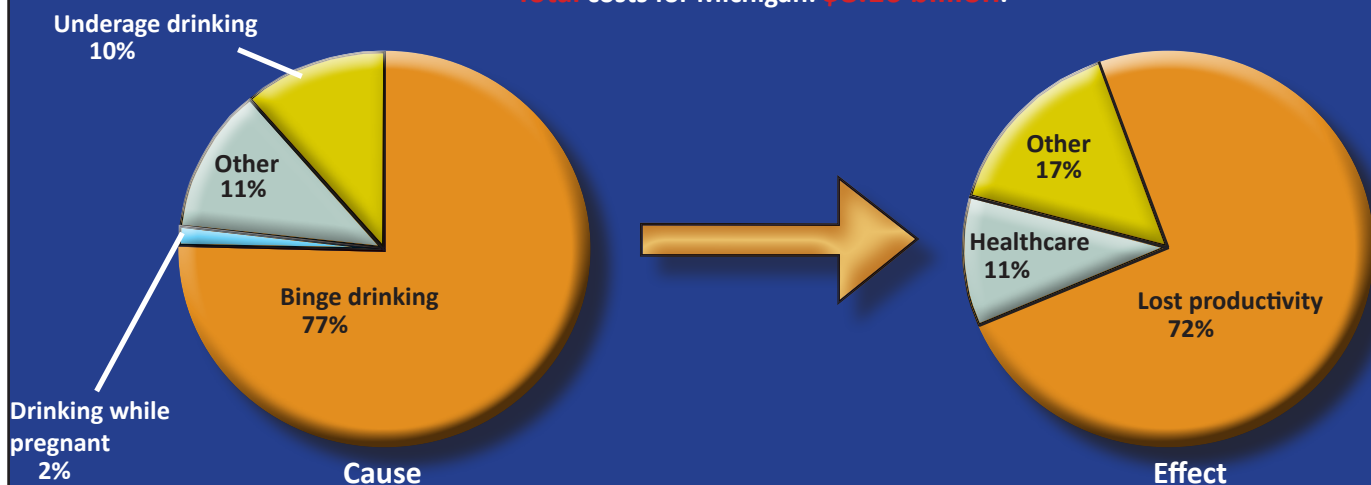
### Other:

- Any alcohol use by pregnant women
- Any alcohol use by those under the age of 21 years

## How much does excessive alcohol consumption cost?

Binge drinking and underage drinking cause the majority of economic costs.

- **Lost productivity** costs include: impaired productivity at work and home, death, and absenteeism.
- **Healthcare** costs include: specialty care for dependence, hospitalizations, and fetal alcohol syndrome.
- **Other** costs include: violent and property crimes, motor vehicle crashes, and corrections.
- **Total costs for Michigan: \$8.16 billion.**



## Economic cost breakdown



Sacks JJ, Gonzales KR, Bouchery EE, Tomedi LE, Brewer RD. 2010 National and State Costs of Excessive Alcohol Consumption. Am J Prev Med 2015; 49(5):e73–e79.

Centers for Disease Control and Prevention. 2017. Alcohol and public health: Frequently asked questions. Retrieved from: <https://www.cdc.gov/alcohol/faqs.htm>.

This publication/presentation/article was supported by Cooperative Agreement Number NU58DP00100X, funded by the Centers for Disease Control and Prevention. Its contents are solely the responsibility of the authors and do not necessarily represent the official views of the Centers for Disease Control and Prevention or the Department of Health and Human Services.